

# HILL and GULLY PAY DIRT

## Palmdale Gem and Mineral Club, Inc.

Volume 11 Issue 10

October 2009

### PGMC HAPPENINGS

#### GENERAL MEETINGS

**October 26, 2009**

**Monday** at the Chimbole Cultural Center in Palmdale  
**7:00 PM**

**November 23, 2009**

**Monday** at the Chimbole Cultural Center in Palmdale  
**7:00 PM**

**TBA**

**HOLIDAY PARTY**  
at the Chimbole Cultural Center in Palmdale  
**More details next month.**

#### BOARD MEETINGS

**November 10, 2009**

**Monday** Show meeting following the General Meeting

**December 8, 2009**

**Tuesday 7:00 PM** at the Chimbole Cultural Center in Palmdale

**January 12, 2009**

**Tuesday 7:00 PM** at the Chimbole Cultural Center in Palmdale

### PROGRAM

We will have a guest speaker, Jeff Woolford, discussing his thesis on Lava Rocks. We will have a projector this time, so it should be great!

### REFRESHMENTS

This months refreshments are provided by:  
Cheri George  
Susan Martin

### Displays

Please bring your Favorite OPAL or pink, blue, and purple rocks to share with the Club!

### Thanksgiving Campout

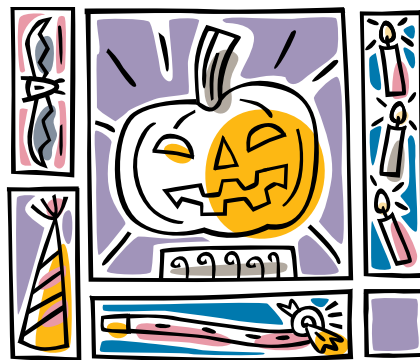
**Wednesday, November 25<sup>th</sup> to Sunday November 29<sup>th</sup>.**

**Boron Dry Lakebed. Thanksgiving Dinner on Saturday Nov 28<sup>th</sup>, 1:00 ish.**

### WORDS of WISDOM

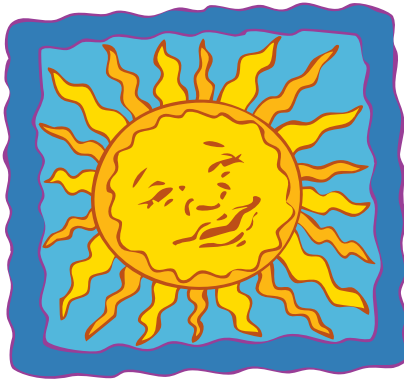


**Rodney Skillings**  
**President**



"There is a great deal of unmapped country within us" - George Eliot (just be thankful the government doesn't have claim to that unmapped country)

"It is better to wear out than rust out." - Richard Cumberland



**SUNSHINE**

We lost our last Charter Member this month; Edith Serfoss died at the age of 93. Her obituary is on page 5. Susy Martin made an attempt to find out exactly when she passed on and when her services were/are. No information has been provided as of the time of publication. If you have any of this information, would you please email the newsletter editor at martinmail007-friends@yahoo.com.

Lloyd Kempton fell on 10/12/09, and they were suppose to repair his hip. He broke the ball bone off of the femur in his left leg. They did the surgery on 10/19. He was at LCH and is currently at the AV Care Center. 44567 15th St. W, Lancaster, CA 93534. (661) 949-5524.

Please keep both families in your thoughts and prayers.

**PGMC - TID BITS**

**MEMBERSHIP**

*Brad Murphy*

**October Birthdays**

Maureen Levitt	3rd
Susy Martin	10th
Talon Morch	10th
Les Kinsell	17th

Your Birthstone is **Opal** for **Hope** and your flower is **Calendula** for constancy.

**ANNIVERSARIES**

Don and Yvette McClung 16th

Enjoy your day to the fullest and continue throughout the year with happiness and good health.



G'day fellow Rockhounds,

I'd just like to remind everyone that membership dues are coming up in November. If anyone has any questions feel free to grab me at a meeting or email me at Bradm25@hotmail.com. If you're in need of a badge, or a replacement, that can also be arranged through me for a cost of \$8 per badge. If you know anyone that's interested in joining, please ask them along to one of our meetings or even on a field trip; there is one coming up in November for Thanksgiving as a matter of fact. It costs nothing to look, and who knows, they may be the ones to find something great! Thanks again for all your support, Brad Murphy ( Aussie ) membership chairman

**EDITOR'S NOTE!**

Articles and reports for publication in the Hill and Gully Pay Dirt that are in an electronic format (Either Email or on a floppy disk, CD, or USB SanDisk) may be submitted to the newsletter committee by the Board Meeting of the month of publication. Any article or report not furnished in electronic format must be submitted to the newsletter committee no later than the Board Meeting one month prior to the month of publication. This schedule and deadline will maintain the quality of our newsletter, keep the publishing of the Hill and Gully seamless and the newsletter committee harmonious.

**PALMDALE GEM  
& MINERAL CLUB  
GENERAL MEETING  
MINUTES**

29 September 2009  
Larry Chimbole Cultural Center  
38350 Sierra Hwy Palmdale, Ca

The General Membership Meeting for the Palmdale Gem & Mineral Club was called to order at 7:10PM by President Rod Skillings.

Rod led the flag salute.

The minutes were published in the newsletter, Rod asked for a motion to accept them as written. Motion made by John Martin, seconded by Russ Lass. Motion passed.

**Correspondence-** Ginny was ill; all the pertinent information was on the front table. Susy Martin had a check for \$1200 from the AV Fair for our door security. The Kern Co Parks Dept sent next years application for the picnic in July 2010 already. There was a Director's Insurance letter from Pat McDaniel asking for payment. Susy gave that to Chris. Susan had received some extra applications for displaying at the Oxnard Show which were made available to our club members.

**Birthdays:** Rich Stanford, Melissa Morch, Chris and Claire Martin stood up, we sang Happy Birthday to them and they paid their dues.

**Fair:** Rod thanked everyone who came out and worked for the club at the fair, whether it was exhibiting, working in the booth or on the doors as security.

**Federation Report:** Don is open to answer any questions you may have concerning insurance and submit them to the Federation at the meeting in November.

**Field Trips:** Susy talked about the November field trip to North Edwards, she asked if anyone was interested in going somewhere else, no one responded. John asked if there was anyone interested in going to the Tomo Kane State Park in Tehachapi, several people raised their hands. He stood up and explained a little about the park, and explained that the tours are limited to about 20 people and there was quite a bit of walking involved. Six people showed interest in this field trip. Susan Walblom asked how many were interested in going to Shark Tooth Hill, and six people raised their hands for this trip also.

**HOSPITALITY:** There were 19 members, 3 Pebble Pups and 4 guests in attendance. The guests were Raili Peck, John Spargur, and Jim and Sue Van Ornum. James Garner won the badge drawing, Raili Peck won the door prize drawing, and

Virginia Sandoval's name was drawn for the money but she was not in attendance so the money goes back into the pot for next month.

**NOMINATING CHAIRMAN:** Brad gave Rod the list of people who have expressed their interest in retaining their offices for next year. Pres.- Rod Skillings; Vice-Pres.- John Martin; Recording Secretary- Cheri George; Corresponding Secretary- Virginia Sandoval; Treasurer- Chris Martin; Federation Director- Don George; Finance & Audit- Susan Martin; Property & Inventory- Mary Cornelison; Nominating Chairman- Brad Murphy.

**DISPLAYS:** Susan Walblom, Rod Skillings and Mary Cornelison all brought displays.

**SHOW:** Our show is 7-8 November, the Dino Guy I, Walt Wright, Flyers, Raffle Tickets, are all set. Get you raffle tickets from Rod, the flyers are on the display table. Please pass them out, try putting them in the Trick or Treat bags.

Due to the absence of the McClungs, there was no drawing. the program will follow the refreshment break.

**Program:** The Durango to Silverton Railway.

Meeting was adjourned at 8:45pm.

## Palmdale Gem and Mineral Club - 50 Years of Incorporation

John Martin

The Palmdale Gem and Mineral Club, Inc. is celebrating 50 years of incorporation in the State of California as a Not For Profit – Educational Corporation under the IRS Code 501(c)4. The Club was founded on November 11, 1957 and Incorporated on August 7, 1959 in Palmdale, California. The object of the club is to collect and study minerals at home and in the field; to provide opportunity for the exhibition and exchange of specimens; to disseminate the general knowledge of the science on mineralogy and allied subjects; to encourage sociability among members.

In its early days the club held its monthly meetings at the Roy R. Marriot School and later at Tamarisk Elementary School. Meetings were also held at the Palmdale Methodist Church and currently the monthly meetings are at the Larry Chimbole Palmdale Cultural Center. The first board of directors consisted of President – Gerry Krier, Vice President – George Duncan, Secretary – Jack Connell, Treasurer – Ester Scribner, Membership & Publicity -

Edith Serfoss, and Directors Dorothea Price, Marcus Bruce and Ed Hanna. Edith Serfoss is a member today and still contributes to the club activities.

In the spring of 1962 the Palmdale Lilac Festival saw a well represented Palmdale Gem and Mineral Club with Gem and Mineral Displays as well as award winning Lilacs. Support for the Lilac Festival continued for several more years. In 1967 the Club held its first Palmdale Gem Round-Up with over a dozen display cases of member's gems, minerals and lapidary art. The annual Rock and Gem Round-UP show continues today with the show held each year in November. The displays have increased over the years and now include some State and National award winning Gem, Mineral, Fossil, Jewelry and Lapidary Art Displays. The club has also participated in Palmdale's Thursday Night on The Square, Christmas Festival and various holiday activities throughout the Antelope Valley. The club is a member of the Palmdale Chamber of Commerce and has worked in support of chamber events for the past several years. The club has been continually involved

with the Gem and Mineral Department at the Antelope Valley Fair and Alfalfa Festival with 12 members and the club itself winning the Blue Ribbon Award for lifetime achievement and support to the Antelope Valley Fair.

Educational programs are supported through the club participation in local High School Scholarship Programs and though the years have sponsored many earth science scholarships for both Palmdale and Antelope Valley High Schools. With the increase in population in the area and the building of new high schools, last year the scholarships were increased to any high school in the Antelope Valley High School District and 3 Earth Science Scholarships were awarded to graduating seniors in excess of \$3,500.00. Earth Science Educational opportunities are also offered to elementary schools and for the past 3 years have provided learning experiences to the at risk children of Palmdale through the Head Start Program at Palmdale High School. The Palmdale Gem and Mineral Club and its members continue to strive to enrich the youth of the Antelope Valley through continued educational activities and local Scholarships.

Edith Serfoss

Edith Serfoss was born to Roy and Mary Bean on March 25, 1916, in Wheeler, Texas. She moved with her parents and brother Carl, by covered wagon 3 months later to Las Animas, Colo., in Eastern Colorado to a homestead where she lived for 18 years. They moved to Mesa, Colo. in 1934, then to Pasadena, CA. in 1936, where she met and married Elbert Serfoss in 1938, while attending Pasadena College. Elbert was an L.A. County Fireman. They had 2 sons Wesley and Frank. After 17 years in Pasadena they moved to Palmdale and also lived in Littlerock before moving to Lancaster in 1979. She joined the Methodist Church and enjoyed volunteer work and also rockhounding. Survived by sons Wesley Serfoss (wife Jeannie) of Pearblossom, CA., and Frank Serfoss (wife Juanita) on Ronan, Mont., 5 grandchildren and 6 great-grandchildren.



Edith Serfoss 1916-2009

FEDERATION REPORT  
October 2009

Next year's California Federation and American Federation Show is only 7 months away. Now is the time to start thinking about what Division and Subdivision you would like to compete in or select a collection of your work you would like to display in Non-competition. It doesn't necessarily have to be work completed by you, simply something you have collected that fits into one or more of the divisions in the AFMS Rule Book, whether you compete or not. Lapidary work, Metal Fabrication (work done by you), Mineral Specimens, Fossils, Scrimshaw (work done by you), Petrified wood, etc.

I don't intend to be quiet about this; we have many members who have some very fine work and/or collections that would fit the bill. Let's make a good showing at the CFMS/AFMS Show in La Habra next June. You will be reminded several times in the newsletter between now and the show in June 2010.

The promotion of our hobby and future of Rockhounding depend upon people such as our members to get out there and show what's possible with a little work. Displaying our work wherever we can is our tool in doing this.

Don George  
PGMC Federation Director

---

---

**How Much Land Does the Federal Government Own?**

Gary DeMar Sep 30, 2009

Do you know how much land in the United States is owned by the Federal Government? It's shocking:

1. Nevada : 84.5%
2. Alaska: 69.1%
3. Utah: 57.4%
4. Oregon: 53.1%
5. Idaho: 50.2%
6. Arizona: 48.1%
7. California: 45.3%
8. Wyoming: 42.3%
9. New Mexico: 41.8%
10. Colorado: 36.6%

Hmmmm.....

Dear Open Access Supporter and Rockhounds,

As you have heard over the last several months, there are many important desert wild lands and rivers that are being targeted for closure by the new legislation being proposed by Senator Feinstein. There are over 400,000 Acres in Southern California 's Deserts and Forests listed in the proposal that is scheduled for closure. Right now, we need your help to let other legislators know that these lands and rivers deserve to remain open and free to access by All Public Land users including responsible oncoming energy development.

Senator Dianne Feinstein has boldly supported creating new national monuments, wilderness areas, national park additions and wild and scenic rivers in the California desert. These new designations would connect Joshua Tree National Park with the Mojave National Preserve, thereby removing from public access some of our prime recreational and collecting areas allowing only access to the special interest groups.

Fortunately, the Interior Department is currently considering allowing industrial-scale energy development on many of these lands which will help to keep our collecting areas accessible. While a rapid transition to renewable energy is essential to address our expanding energy needs, we have the technology to use the resources of this public land and protect endangered species habitat while keeping the Public Lands, managed by the Bureau of Land Management, open and accessible to all for development and recreational usages.

Please take a moment now to let Senator Feinstein know that you strongly disagree with her proposed monuments, wilderness areas, national park additions, and wild and scenic rivers in our Southern California deserts.

Sample letter:

Subject: Keeping our Desert open for all to use

Dear Senator Feinstein:

I am writing to urge you to reconsider your introducing legislation that would create new national monuments, wilderness areas, national park additions and wild and scenic rivers in the California desert. These new designations would limit recreational access to a large amount of Public Land that is now open and accessible to all responsible desert users. Joshua Tree National Park and the Mojave National Preserve already compose a large portion of the California Desert Landscape and provide more than adequate protection of important wildlife habitat, beautiful scenery, and provide for conservation of these already protected areas. I believe that greatly enhancing renewable-energy generation and protecting our public lands are compatible goals, and large-scale energy projects can coexist in our public lands such as those in the proposed closure areas. Please reconsider your bill that closes, to all but special interest groups, this important part of California 's natural heritage and please keep it open and accessible to all California Desert Users and Voters. Thank you.

Sincerely,

YOUR NAME

YOUR ADDRESS

LETTERS CAN BE EMAILED DIRECTLY TO

<http://feinstein.senate.gov/public/index.cfm?FuseAction=ContactUs.Home>

## 2009 Rock'N'Gem Roundup

November 7<sup>th</sup> & 8<sup>th</sup>

9:00 am – 5 pm daily

It is time for OUR CLUB SHOW!

I hope we count on each one of you to help make this an outstanding Show this year.

Many areas need volunteer power!

We will need members to help with serving Friday night dinner!

We will need workers for the following areas from 9 am – 5 pm on both Saturday and Sunday:

**PLEASE VOLUNTEER!**

\*Kids Area\*

\*Welcome Table\*

\*Country Store\*

\*Dessert Table\*

We will also need help for take down Sunday evening at 5:00 pm.

**The more members we have that participate and help the easier it is on all of us.** Our Show is becoming very popular in the Gem & Mineral World; please help make it the best it can be!

~We are asking that each member donate something for the dessert table to sell (cookies, brownies, cake, pie) anything sweet we can sell during the Show.

~We also need brownies for the Friday night Dinner. If each member donates, 1 dozen we will have plenty. The Club provides the Friday night dinner for all vendors, people putting in displays and club volunteers on set up day.

~Bring your Country Store donations to the fairgrounds Friday any time after 9 am.

~We are looking for donated plastic or paper grocery bags for the country store and silent auction.

~We are also asking that each Club Member donate one prize for the raffle. Please bring your raffle donation to the October general meeting and turn it in to Susan Martin.

If you have, any questions please call:

Susan (661) 406-0143 or Rod (661) 400-5198

*Thank you for Supporting  
Your Club Show!*

---

## Upcoming Shows

### **November 7-8 2009, Lancaster, CA**

Palmdale Gem & Mineral Club

2551 W. Ave. H, Hwy 14

Hours: 9 - 5 both days

Susan Chaisson-Walblom (661) 943-1861

Email: [SLChaisson@yahoo.com](mailto:SLChaisson@yahoo.com)

Website: [pgms@antelecom.net](http://pgms@antelecom.net)

### **November 21-22 2009, Oxnard, CA**

Oxnard Gem & Mineral Society

Oxnard Performing Arts Center

800 Hobson Way

Hours: Sat. 9-5; Sun. 10-4

Norb Kinsler (805) 644-6450

Email: [info@oxnardgem.com](mailto:info@oxnardgem.com)

Website: [www.oxnardgem.com](http://www.oxnardgem.com)

**For a complete list of shows visit the CFMS website at [www.cfmsinc.org](http://www.cfmsinc.org)**

---

---

### **HILL and GULLY PAY DIRT**

Palmdale Gem and Mineral Club, Inc.

P. O. Box 900279

Palmdale, California 93590

Email: [pgmc@antelecom.net](mailto:pgmc@antelecom.net)

Website: [www.palmdalegems.org](http://www.palmdalegems.org)

PLACE  
STAMP  
HERE



---

#### *Inside This Issue*

- 2009 Rock 'N Gem Roundup News
  - PGMC - 50 years of incorporation
  - Thanksgiving Campout info
  - The Usual Stuff
- 
-