

HILL and GULLY PAY DIRT

Palmdale Gem and Mineral Club, Inc.

Volume 16 Issue 5

May 2010

PGMC HAPPENINGS

GENERAL MEETING

May 24, 2010

Monday at the Chimbole
Cultural Center in Palmdale
7:00 PM

June 28, 2010

Monday at the Chimbole
Cultural Center in Palmdale
7:00 PM

BOARD MEETING

June 8, 2010

Tuesday at the Chimbole
Cultural Center in Palmdale
7:00 PM

July 13, 2010

Tuesday at the Chimbole
Cultural Center in Palmdale
7:00 PM

NOV. SHOW MEETING

June 14, 2010

Monday at Russ and Lorna's
home
6:30 PM



PROGRAM

Mt. St. Helens -
A presentation by Tony and
Sandy Fender

REFRESHMENTS

**This month refreshments
are brought to you by:**
Jennifer Martin

DISPLAYS

Bring green rocks or minerals, any favorite rock, or a find from Lucy Tunnel's house.

Part of membership in the PGMC club involves displaying personal items or collections. If you need help with some ideas, feel free to ask a club member for input.

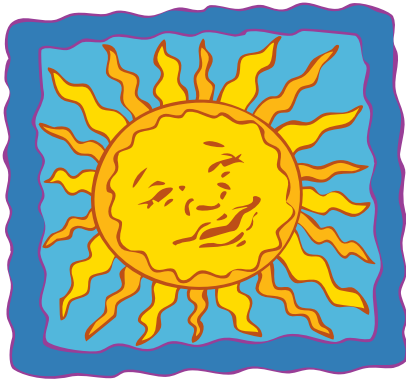
WORDS of WISDOM



**Rodney
Skillings
President**

Hello Everyone,

The year is moving right along. This year we are fortunate to have the CFMS Show and Convention here in Southern California. It will be June 18, 19 & 20 down in La Habra. Mark your calendars and we will see you there. Before you know it the Annual Picnic, Antelope Valley Fair and Rock'N'Gem Roundup will be here. Our annual Club picnic in Tehachapi is scheduled for July 21-25. I hope you have your calendar marked and you are planning to attend. This year's Antelope Valley Fair will be August 20 - 30. The fair is currently accepting applications for displays, so get your entries turned in. We will be passing out sign-up sheets at our general meetings for workers in our Fair booth. So bring your calendars with you to the next meeting so you can sign up to volunteer. See you at the next meeting!
Rod



SUNSHINE

Joe Wood had two minor strokes and fell down and broke his hip. Please keep him in your thoughts and prayers.

Russ Lass has a compression fracture in his foot. We wish you a speedy recovery.

Ginny Sandoval is still waiting for her hand to heal and her mother has been in Intensive Care. We wish you a quicker recovery and will keep your mom in our thoughts and prayers.

If you have information that should be published in Sunshine, please contact the editor at 661-947-1816 or martinmail007-friends@yahoo.com.

PGMC - TID BITS

MEMBERSHIP

Lorna Lass

HAPPY BIRTHDAYS

May Birthdays are:

David Walblom	1st
Nancy Hathaway	7th
Margaret Letsinger	15th
Ross Hathaway	24th

Your Birthstone is **Emerald** for Happiness and your flower is **Lily of the Valley** for **Purity**

Last month in error, Jackie Birch was left off the birthday list. Her Birthday was April 17th. Happy birthday Jackie. Wishing you many more!!!!!!!

Enjoy your day to the fullest with good health and happiness all through the coming year Have a great day and and many more!

ANNIVERSARIES

No anniversaries this month

A.V. Fair Info cont.

follow the instructions for completing your entry. If you do not have internet capabilities, then you must go to the AV Fair Entry Office, (Behind the Clock Tower) and they will assist you in completing the entry process.

The only way to pay the entry fee is by credit/debit card on line at time of entry, or by phone to the entry office, (M-T-W 9:00 AM to 5:00 PM) by credit/debit card at time of entry by phone. The last way is to go to the entry office, complete the entry on site and then you may pay by check or cash. If their normal business hours do not meet with your schedule, call the entry office and they will arrange to meet you on your schedule and process your 2010 AV Fair exhibit entry. To date there are 5 entries in Gem and Mineral. There are 500 entries total to date, most are livestock.

Cheri George has informed the Gem and Mineral Committee that she will help walk anyone through the process of Gem and Mineral Exhibit Entry, Just call her during your entry process.

AV Fair Gem and Mineral Committee - 2010

Verde antique

From Wikipedia, the free encyclopedia

Verd antique (obsolete French, from Italian, verde antico, "ancient green"), or verde antique, is a serpentinite breccia popular since ancient times as a decorative facing stone. It is a dark, dull green, white-mottled (or white-veined) serpentine, mixed with calcite, dolomite, or magnesite, which takes a high polish. It is sometimes classed, erroneously, as a variety of marble ("serpentine marble", "Connemara marble", "Moriah stone", etc). It has also been marketed as "ophicalcite" or "ophite".

Verd antique is used like marble especially in interior decoration and occasionally as outdoor trim, although the masses are frequently jointed and often only small slabs can be secured. It was known as lapis atracius to the ancient Romans and was quarried especially at Casambala, near Larissa, Thessaly, in Greece. The term "verd antique" has been documented in English texts as early as 1745.

Non-brecciated varieties of a very similar serpentinite, sometimes also called "verd antique", have been quarried at Victorville, San Bernardino County, California, at Cardiff, Harford County, Maryland, and at Lamoille County, Vermont.



Federation Report May 2010**Mt. St. Helens Presentation Preview**

On May 18th 1980 Mount St. Helens erupted with a fury that few people expected. The devastation to the mountain habitat was enormous. Since that time nature has healed itself, and the mountain is starting to grow again. Sandie and Tony Fender have traveled to the mountain both before the eruption and numerous times since 1980. They have chronicled the beauty of this majestic lady prior to 1980, the vastness of the devastation that occurred, and the way this mountain has recovered over the years. On this 30th anniversary of the eruption, Sandie and Tony Fender will present their video presentation on “The Eruption of Mount St. Helens”.

The Multi-Federation trip is scheduled for May 28-June 2nd, there are several trips scheduled for different locations within a 40-50 mile radius of Fontanel, Wyoming (Blue forest Petrified Forest area).

The base camp will be at Slate Creek Campground, just east of Fontenelle, next to the Green River. This is a no fee campground with fire pits, tables and restrooms. We will post the area with signs marking camp area on Thursday May 2ih. Trips will leave from the camp to the Blue Forest Dig area, one trip to the Eden Valley area, and others, Most of the trips will be related to collecting Petrified Wood. At the base camp we will have maps available for other areas.

For those not camping at Slate Creek and need a Motel there is one at Farson ,about 35 minutes to the east Sitzmans, (307) 273 9246, this is a small motel only 6 rooms so make your reservations now. Rates = 1 person \$50+ tax, 2 per \$58.+ tax (one Queen Bed) 2 Beds \$65.plus tax. Farson also has Gas and Groceries. There are more motels in Kemmerer also: Fossil Butte Motel (307) 877-3996, Fairview Motel (307) 877-3938, Frontier Suites (307) 877-3377, Energy Inn (307) 877-6901, Antler’s Inn (307-877-4461. There is also an RV Park in Farson and several in Kemmerer. Kemmerer is about 25 miles from our base camp. You can also get gas and some supplies in Fontenelle.

For all of you who plan to make this wonderful trip, remember when you get home there will only be two weeks to get yourselves ready for the CFMS/AFMS Show in La Habra. We hope you have made your application to the appropriate person, as time is getting short and space is very limited.

Sincerely,

Don George

Federation Director

PALMDALE GEM & MINERAL CLUB
GENERAL MEETING MINUTES
29 March 2010

LARRY CHIMBOLE CULTURAL CENTER
38500 SIERRA HIGHWAY
PALMDALE, CALIFORNIA

Meeting was called to order by John Martin, at 7:13pm.

Flag salute was led by Cheri George.

MINUTES: Minutes had been published in the newsletter. Motion to approve as printed was made by Susy Martin, seconded by Russ Lass, motion passed.

CORRESPONDENCE: Ginny passed out the correspondence to the appropriate people.

HOSPITALITY: Members present- 14, 4 guests (Leslie Kalmbach; Nick Marquez and Pam Callahan; and Tony Sneath), and 1 pebble pup. The badge drawing was won by Mary Cornelison; Attendance was won by Leslie Kalmbach; the \$5 drawing was won by Lorna Lass.

MEMBERSHIP: Brad said that next month we will check the roster for accuracy so we can have it oriented.

SUNSHINE: Gary Levitt has had surgery on his spine. We hope his recovery will be short and as pain free as possible.

SOCIAL: Annual Tehachapi picnic is scheduled for 21-24 July.

DISPLAYS: None

President Rod Skilling arrived at this time and took over the meeting.

REFRESHMENTS: Provided by Rod and Russ. Buy raffle tickets now!

RAFFLE: Hunter Chaisson- 2; Russ- 2; David- 2; Pam Callahan- 1; Lorna- 3; Ginny- 1.

PROGRAM: Volcanoes.

Meeting adjourned at 8:30pm.

BLM AND NATIONAL PARK FEE FREE DAYS!

All national parks, national wildlife refuges, and many areas managed by the Bureau of Land Management will offer free admission on June 5-6, August 14-15, September 25 (Public Lands Day), and November 11 (Veterans Day)

Please tell all your friends.....

John Martin
AFMS Conservation and Legislation Committee

A.V. Fair Info

The deadline for entries in to this years Antelope Valley Fair is July 10th, so get your entries in soon.

Remember there is no printed premium book this year and all entries are completed on line.

Go to www.avfair.com in your web browser and click on the "2010 Exhibit Entry Guide", halfway down the page. Then on the entry page go to the "Still Exhibits" and click on Gem and Minerals to see the entry guide. Select your category and then return to the Exhibit Entry guide page and

Upcoming Shows

June 4-6 2010, Woodland Hills, CA

Rockatomics Gem and Mineral Society
Pierce College
6201 Winnetka Ave., Woodland Hills
Hours: 9 5
Gary Levitt (818) 993-3802
Email: Show@Rockatomics.org
Website: Rockatomics.org

June 18-20 2010, Whittier, CA

AFMS/CFMS Show and Convention
Hosted by North Orange County Gem and
Mineral Society
So. CA University of Health Sciences
Campus
16200 E. Amber Valley Rd., Whittier CA
Hours: 10-5 daily
Don Warthen (626) 330-8974
Email: odwarthen@verizon.net
Website: www.nocgms.com

July 10-11 19-20 2010, Culver City, CA

Culver City Rock & Mineral Club
Veterians memorial Auditorium
4117 Overland Ave (Overland & Culver)
Hours: Sat 10-6; Sun 10-5
Robert Thirlaway (310) 213-7677
Email: thirlawr@earthlink.ne
Website: http://
www.CulverCityRocks.org

For more shows and dates visit cfmsinc.org

HILL and GULLY PAY DIRT
Palmdale Gem and Mineral Club, Inc.
P. O. Box 900279
Palmdale, California 93590
Email: pgmc@antelecom.net
Website:
www.palmdalegemandmineral.com

PLACE
STAMP
HERE

Inside This Issue

- A.V. Fair Enrty Info
 - Federation Report
 - Mt. St. Helens
-