

HILL and GULLY PAY DIRT

Palmdale Gem and Mineral Club, Inc.

Volume 16 Issue 2

February 2010

PGMC HAPPENINGS

GENERAL MEETINGS

February 22, 2010

Monday at the Chimbole
Cultural Center Palmdale
7:00 PM

March 29, 2010

Monday at the Chimbole
Cultural Center Palmdale
7:00 PM

April 26, 2010

Monday at the Chimbole
Cultural Center Palmdale
7:00 PM

BOARD MEETINGS

March 9, 2010

At the home of Chris and
Jennifer Martin (west
Palmdale near AV Mall) If
you need directions, please
email or call the Martins.
7:00 PM

April 13, 2010

Tuesday at the Chimbole
Cultural Center Palmdale
7:00 PM

May TBD, 2010

7:00 PM



PROGRAM

**video: Identification of
Minerals**

** program subject to change*

REFRESHMENTS

This month refreshments are
brought to you by:

Rodney Skillings and Allison
McClung

DISPLAYS

David Walblom

The February displays are
your favorite find from
Quartzsite or your favorite
Amethyst or purple rock.
Please bring labels identify-
ing your displays.
Thanks! David

WORDS of WISDOM



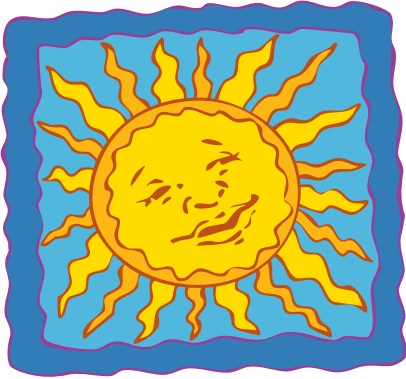
**Rodney
Skillings
President**

Hello fellow Rock Hounds,
I would like to say Happy
New Year to all of our re-
turning and new members.

This is to be a fun group.
Many little events occur
during the year in which any
and everyone can partici-
pate. Please let a board
member know if and when
you are able to assist.

As in all clubs we have some
yearly events. Our first one
is in July at our summer
camp out, pot luck and
meeting in Tehachapi. This
is a great place meet all our
club members and have a
great lunch; while doing a
little camping (camp fire
songs included).

Continued on page 3



SUNSHINE

It is with much sadness that we report the passing of Gail Becker. She was receiving care in a care facility in Las Vegas for numerous ailments. She was born October 10, 1936 and passed away on February 17, 2010. She will be greatly missed. Please keep Cliff and their family in your thoughts and prayers through this difficult time.

Cora McCrumb's daughter Deena, had surgery on February 8th. Please keep her in your thoughts and prayers.

PGMC - TID BITS

MEMBERSHIP

Brad Murphy

HAPPY BIRTHDAY

February Birthdays:

Robert Garner	1st
Yvette McClung	6th
Katie Chaisson-Doull	14th
Bill McGeehon	18th
Ginny Sandoval	20th
Louise Kempton	26th

Your Birthstone is **Amethyst** for sincerity and your flower is **Violet** for modesty

The Roster is Coming...

*** Please see Brad Murphy or Chris Martin at the February Meeting if there are any changes in your address, email or phone number. They are in the process of updating the roster. Thanks.*

A Field Trip is planned for April 2-4, Easter weekend. If you are interested in attending, please let a Martin know. More information will be in next month's newsletter.

Social Events for 2010

July : Campout and meeting, date and location TBD

December : Holiday Party on Thursday the 16th.

November 27th: Thanksgiving Dinner (Saturday afternoon)

November 22nd : Club Birthday Party (at Gen. Mtg.)

PGMC is looking for anyone interested in coordinating and participating in running a club booth at the Poppy Festival, April 24-25th at Lancaster City Park. If interested in helping out in any way, please contact Susy Martin at 942-8336.

President's Message Cont'd

Then is the Antelope Valley Fair in August. This is a community event letting the public know about our hobby. We will be needing help during this time, so mark your calenders.

After that is our Rock 'N' Gem Round up the first week end in November. This is our big fund raising event of the year. There will be lots of work before and during the show. Again, we will be scheduling two great speakers for the show. Please talk our show chair-person to find out how you can help.

The last event of the year is our Christmas Party. It takes place in December and that is when we present our new board Members for the next year. To wrap up the evening we have a game of bingo where the prizes are rocks (go figure).

Your 2010 President

**PALMDALE GEM &
MINERAL CLUB
GENERAL MEETIN
MINUTES
25 January 2010****LARRY CHIMBOLE CUL-
TURAL CENTER
38500 SIERRA HWY
PALMALE, CALIFORNIA**

Meeting was called to order at 7:06pm by President Rod Skillings.

Pledge of allegiance was led by Vice President Rod Skillings

CORRESPONDENCE:
Correspondence was read and passed out.

MINUTES: Minutes from the last General Meeting were read. Motion to accept the minutes was made by Russ Lass, and seconded by Bob High. Approved as read.

TREASURER: No Report.

Quartzsite was discussed. Rod stated that if people are interested in helping with committees for our show to let him know.

SOCIAL: The 2010 PGMC Holiday party is scheduled for 16 December.

REFRESHMENTS: Lorna has the signup sheet for refreshments for the year.

PROGRAM: Tonight's program was sharing our Quartzsite finds. The February program will possibly be a DVD on Silversmithing and finishing.

HOSPITALITY: Lorna Lass stated that there 14 members in attendance; and there were also two guests J.D. & Jeanne Roberts. No drawings were held this month.

NEWSLETTER: Jennifer apologized for not getting the newsletter out in January. She discussed an upcoming field trip, and said that more information will appear in the February newsletter.

BIRTHDAYS: No birthday people

BREAK

Refreshments were provided by Russ & Lorna Lass

DRAWING: Winners were: Rodney- 1; Talon- 2; Ginny- 3; Bob-1; Yvette-1; Jeanne Roberts- 1; Rich-1; JD Roberts- 1.

Motion to adjourn was made by Yvette McClung; seconded by Rich Stanford. Motion passed.

Meeting was adjourned at 7:55pm.

Scholarship

I have contacted the Antelope Valley Union High School District and our application has been distributed. Rhonda Hickman, Executive Secretary of Student Services forwarded our information the head counselors at the following high school: AV, Eastside, Highland, Knight, Lancaster, Littlerock, Palmdale and QH.

I spoke to a representative at Eastside and she said she would collect all the application from her school and forward them to us.

Susan Martin
Scholarship Chairman

Kern County Parks – Tehachapi Picnic

PGMC Summer
Heatwave Campout is on!

Tehachapi Mountain Park
- Sierra Flats Group
Campsite.

July 21 through July 25,
2010

Picnic and food feast on
Saturday, July 24, 2010

Mark your colanders now
and plan to attend.....

Susan Martin
Social co-chair

***From the CFMS February
newsletter
Field Trips South
Ant Hill-February 27
By Shep Koss & Adam
Dean***

*With last year's great turnout
of nearly 100 attendees
we're doing it again.*

*WHERE: Ant Hill, Bakers-
field, CA WHEN: February
27, Saturday at 9 a.m.*

*MATERIAL: 15 million year
old fossils of shark teeth,
whale teeth, seal teeth,
porpoise teeth, whale bone,
etc from Middle Miocene
Marine beds. MEETING
SPOT: 9 a.m. North east of
Bakersfield on corner of
Lake Ming Rd and Alfred
Harrell Hwy at the Chevron
station.*

** Alfred Harrel Hwy can be
reached by heading east
from Bakersfield on Rt 178
or heading east on Rt 58 to
Comanche Rd then turning
north.*

** Comanche Rd becomes
Alfred Harrell at Rt 178.*

** From here go about two
miles to Lake Ming Rd and
meeting spot.*

** Here we will sign Waiv-
ers of Liability, see samples
of specimens and receive
digging instructions.*

*TOOLS: hammer, chisel or
screwdriver, 1/4" mesh
sifting screen or colander,
shovel, bucket, zip lock
bags, water spray bottle.
Hiking shoes and clothes to
get dirty in. From Meeting
Spot: From the meeting spot
we will drive about another
mile to parking area then
hike about 3/4 mile on a
uphill slope which gets steep
the last 200 yards. The
fossil trenches are near the
summits of steep hills. Be
advised: This is a known
Valley Fever area although
rarely a problem especially
in winter. Wear masks if
concerned. Also snakes and
spiders inhabit these hills.*

*To find fossils requires a
combination of sifting debris
or prying out chunks of the
"wall". These hills will soon
undergo housing develop-
ment so collect while you
can.*

*Weather and Roads: Roads
are paved until last 300 feet
to parking area. Weather is
unpredictable although this
soil is more rain tolerant.
Dress accordingly for tem-
peratures and conditions.*

**CFMS Rules Committee
COMPETITIVE EXHIBITING
By Dee Holland**

How do you create your exhibit?

** Did you see another exhibit and decide to use some of the ideas that person used to create your own exhibit?*

** Did you use a material background that complements your specimens? Is the label material compatible with the background material?*

** Did you spend time selecting the best of your specimens, if there are colors involved have you taken the time to disperse the colors?*

** Did you select risers to show your specimens off?*

** Did you know you could build a two-foot exhibit case for items that might look small in a four foot case?*

** Did you know that some competitive divisions allow two four foot cases?*

** Or you could build an eight-foot case, but this would be hard to transport.*

** We have two ways many people currently exhibit.*

At a club show; This is where you can exhibit for the first time and not feel intimidated.

Next, you can exhibit at your local County Fair, if they have a gem, mineral, lapidary and fossil section in their Fair.

Next, you can take your exhibit to the regional level and compete at the Next level.

This is where everything seems to break down. You've heard horror stories from "old timers" of how things were when they tried to put in a competitive exhibit for the first time and how they were humiliated. Put down by judges who told them, "I've seen better material in a museum." Or one of my personal favorites "I've never given anyone a perfect score, there are no perfect cases."

You've all heard the following: "The Rules are too hard, the rule book is huge, why can't we simplify it?" Did you know the rules book was once a single big sheet of paper? What you see these days is because there were additions to each division, and new sections to those divisions. We have even added a new BEADING section. Is the book huge? Yes, there are 102 pages total, but you should only be concerned with the SECTION you are interested in; This makes the book

much smaller for you.

The Rules book is broken down in to ten divisions: A-Open; B-Minerals; C-Lapidary; D- Jewelry; E-Education; F-Fossils; G-Petrified Wood; H-Scrimshaw; and the new one I-Beading. UV-Ultraviolet.

Now, when the rules started out there were only Minerals. Each of the others was added as interest and need occurred. So when you break "the rules book" down, it doesn't look so imposing.

The first section of the Rules Book has twenty-one pages of regulations for competitors and also directions for the judges and also for the rules committee. Since this section has been contentious and confusing over the years the AFMS Uniform Rules Committee has begun a re-write of these sections.

Finally, you can compete at the NATIONAL LEVEL, and this is available this year at La Habra for those who have earned a master score of 90 at the regional level in the past twelve years. OR for those of you who enter MASTER at the CFMS level and score 90 or above and are judged again at the AFMS level. TROPHIES ARE WAITING, does one have YOUR NAME ON IT???

Up Coming Shows

February 26-27 2010, Northridge, CA
Del Air Rockhounds Club
United Methodist Church
9650 Reseda Blvd. (at Superior St.)
Hours: Fri. 3 p.m. -9:30 p.m. - Sat.
10-5
Julie Marin (818) 886-7190
Website: <http://delairrockhounds.blogspot.com>

March 6-7 2010, Ventura, CA
ventura Gem & Mineral Society
Seaside Park, Ventura Co. Fairgrounds
10 W. harbor Blvd.
Hours: Sat. 10-5; Sun. 10-4
Andy Anderson (805) 987-0043
Email: vgms_editor@roadrunner.com
Website: vgms.org

March 19-21 2010, San Bernardino, CA
Orange Belt Mineralogical Society
Western Regional Little League Ball Park
6707 Little League Drive
Hours: 9 a.m. - Dusk daily
Shane Ripley (909)557-3605
Email: OBMS_PR@yahoo.com
Website: <http://obmsrocks.yolasite.com>

HILL and GULLY PAY DIRT
Palmdale Gem and Mineral Club, Inc.
P. O. Box 900279
Palmdale, California 93590
Email: pgmc@antelecom.net
Website: palmdalegemandmineral.com

PLACE
STAMP
HERE

Inside This Issue
- *Competitive Exhibiting*
- *CFMS filed trip info*
- *January meeting minutes*
